



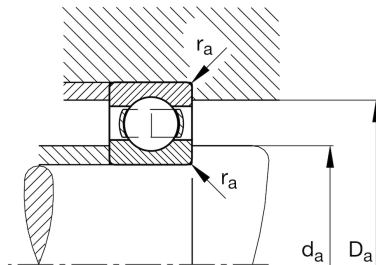
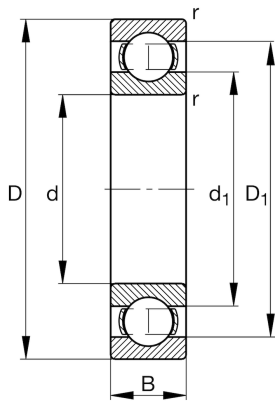
FAG

6309

Deep groove ball bearing

Schaeffler ID:
0167235200000Deep groove ball bearing 63, single row,
steel sheet metal cage

Technical information

**Main Dimensions & Performance Data**

d	45 mm	Bore diameter
D	100 mm	Outside diameter
B	25 mm	Width
C_r	56,000 N	Basic dynamic load rating, radial
C_{0r}	31,500 N	Basic static load rating, radial
C_{ur}	2,240 N	Fatigue load limit, radial
n_G	9,500 1/min	Limiting speed
n_{gr}	8,200 1/min	Reference speed
	0.814 kg	Weight

Dimensions

r_{min}	1.5 mm	Minimum chamfer dimension
D_1	83.3 mm	Shoulder diameter outer ring
d_1	62.3 mm	Shoulder diameter inner ring

Mounting dimensions

$d_{a min}$	54 mm	Minimum diameter shaft shoulder
$D_{a max}$	91 mm	Maximum diameter of housing shoulder
$r_{a max}$	1.5 mm	Maximum fillet radius

Calculation factors

f_0	12.9	Calculation factor
-------	------	--------------------

Temperature range

T_{min}	-30 °C	Operating temperature min.
T_{max}	150 °C	Operating temperature max.